

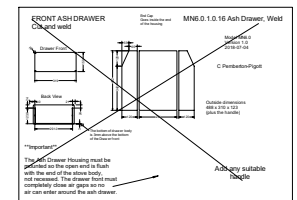
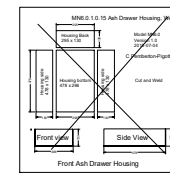
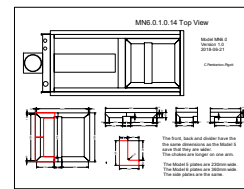
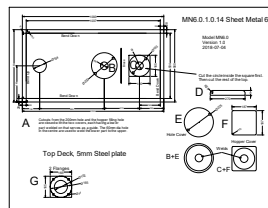
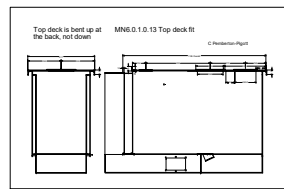
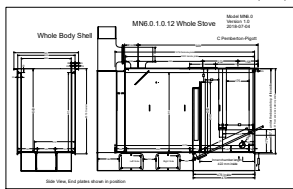
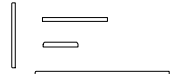
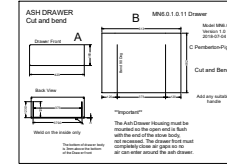
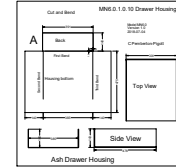
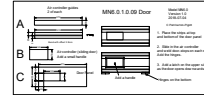
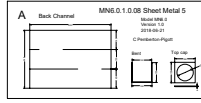
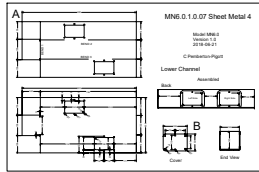
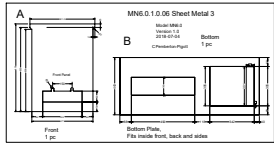
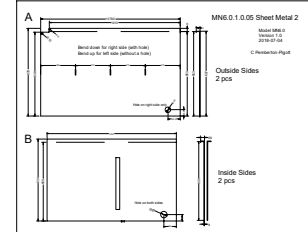
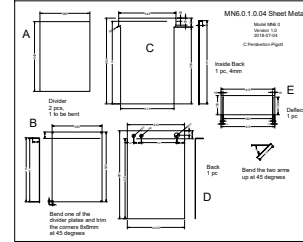
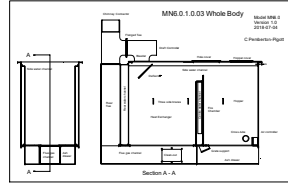
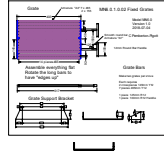
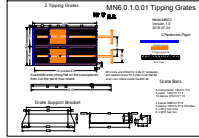
Mongolian 35 kW Low Pressure Boiler Model 6.0 v1.0

Model MNG.0
Version 1.0 for 40mm plastic refractory plates
2018-07-04

Materials:
4.0 mm Mild Steel Sheet
Plastic refractory plates 40mm thick
Module 643 x 1000

MNG.0 1.0.00 Tile back

Instructions:
Inlets bends are sharp.
Chimney connector is 100 outside dia
Front end plate is placed ON the end, not inside
The front height is to suit local customer preferences.
Plastic refractory plates are insulated with fireproof cement or clay
Door hinges: 2x13mm buffer hinges welded on the back side
Door latch on left as appropriate - door must seal all round



Cut and Weld Alternatives to Bent Sheets